

Specification

Type	Weighing range	Division
PTS1000-BS	1000g	0.10g
PTS3000-BS	3000g	1.00g
Platform size	145 x 145mm	
Weight	620g	
Operating temperatur	0-40°C(32-104°F)	
Power supply	4x1.5V / AA Batteries	
	Power adaptor : 100-240VAC / 9-12VDC	



Instruction manual



Multipurpose bench scale

PTS1000-BS 1000g d=0.1g

PTS3000-BS 3000g d=1.0g

PESOLA Präzisionswaagen AG
Chaltenbodenstrasse 4A
8834 Schindellegi
Switzerland
Tel +41 (0)41 769 60 40
Fax +41 (0)41 769 60 42
e-mail: info@pesola.com
Internet: www.pesola.com

Notes and general information

The scale must be placed on solid and level surface.

Dirt, dust, moisture and aggressive solvent must be avoided.

Place the parts the center of the platform.

Do not leave the load over a longer period on the platform.

After big variation in temperature, leave the scale in the ambient temperature for approx. 1 hour for acclimatisation.

Important:

Do not exceed the maximal weight as specified for this type.

Use only leakage proof batteries (4 x 1.5V AA)

If the scale is not used for a long period, remove the batteries.

If a power supply unit is used (not on scope of delivery) make sure the specifications are according: 100-240VAC / 9-12VDC

Any warranty claim will not be accepted, if the listed rules are not observed.

When unpacking, before first setup:

Remove the transportation supports: Lift the platform and remove the cardboard pieces

Setting functional parameters

1. Activate parameter setting.

Push [ON/OFF] key, to switch of the scale.

Push [ZERO] key and at the same time [ON/OFF] key.
A_ON or A_OFF is displayed.

2. Automatic switch-off function.

If A_ON or A_OFF is displayed, push [ZERO] key to switch on the function, display: A_ON; or switch off the function, display: A_OFF

3. Automatic LCD display backlight function.

If A_ON or A_OFF is displayed, push [UNITS] key.

Display: L_ON or L_OFF.

With the [ZERO] key the autom. backlight is switched on,
display: L_ON, or switched off, display: L_OFF

4. Back to weighing function.

Switch the scale off-on. (Key ON/OFF)

Calibration

When to calibrate

Calibration may be required because the weight of a mass in one location is not necessarily the same in another location. Also with time and use, mechanical deviations may occur.

How to calibrate

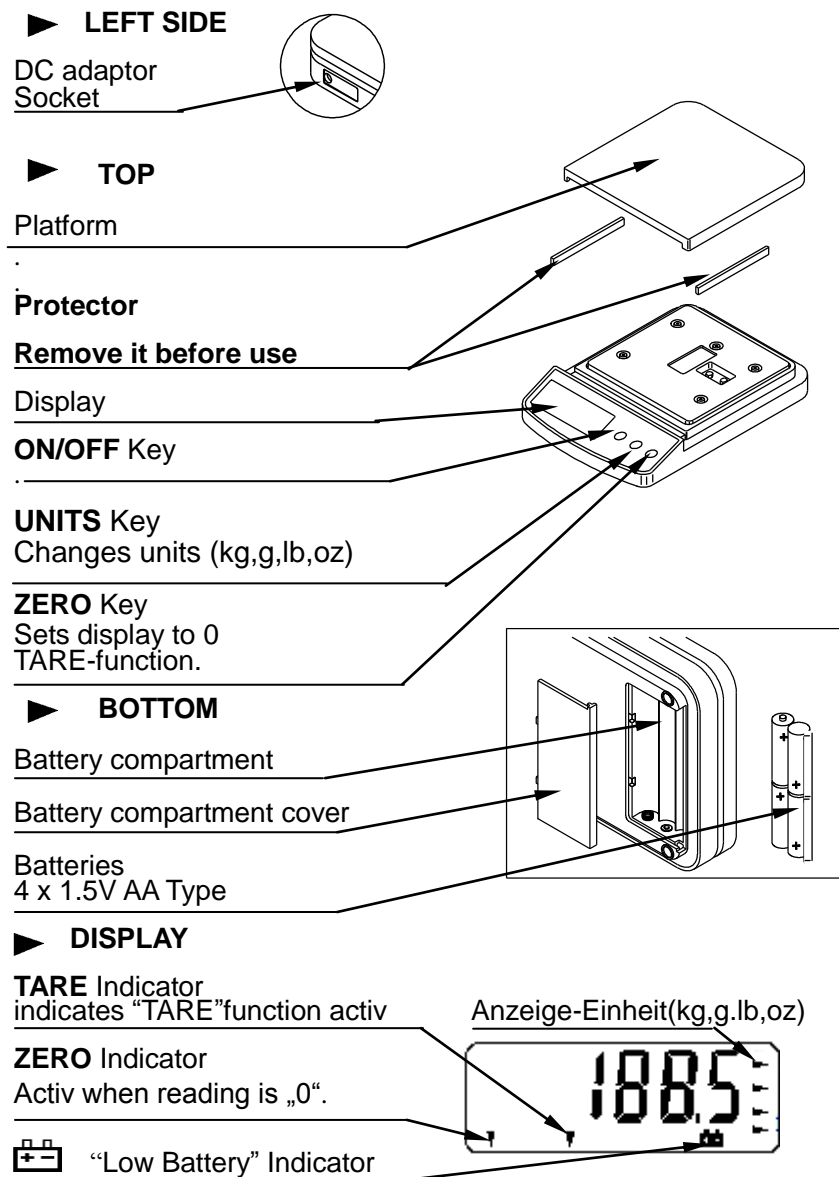
1. Turn of the scale for 1 minutes.
2. **Enter calibration mode**
Push [UNITS] key and at same time push [ON/OFF] key.,
Display: CAL followed by the A/D value (internal calculation value.)
3. **Calibration with standard weight**
If A/D value is displayed, push [UNITS] key.
The specified calibration weight will be displayed.
4. Place the according standard weight in the middle of the platform.
Push [UNITS] key to confirm. PASS.will be displayed
The calibration is now finished.
5. **Back to weighing function**
Switch scale OFF-ON

Features

- *Automatic power off
- *Automatic display backlight
- TARE function
- „Low Battery“ display
- kg,g,lb,oz conversion
- Big LCD Display
- Calibratable.
- Power supply : Batteries or power supply unit.

*Selectable, note “Setting functional parameters”.

Part description



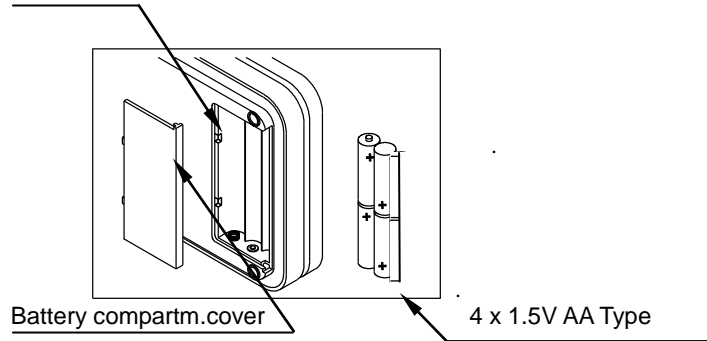
Setup

1. Installing batteries / connecting AC power supply adaptor

Batteries

Remove battery compartment cover.

Insert 4 pcs. 1.5V AA Type. **Important** : Check the polarities. (+ /-)

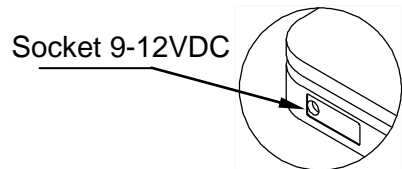


Power supply adaptor 100-240VAC / 9-12VDC

The socket is placed on the left side.

Important:

Use only specified Power supply adaptor with output voltage 9-12VDC,



2. Setting up the scale

Avoid installing the scale in direct sunlight and avoid the scale to heat up. Place the scale on solid and level surface.

After unpacking, before setup: Remove the transportation supports: Lift the platform and remove the cardboard pieces.

Weighing

Important:

Place scale on solid and level surface. Let the scale warm up for 10 minutes.

Error messages

Err-O: Overload

: Low battery

If calibration is required, note "Calibration" on page 5.

Weighing procedures

1. **Switch on:** Push [ON/OFF] Key

All segments appear on LCD display for a few seconds. Finally 0 .000 will be displayed;

2. **Selecting the weighing unit**

Push [Unit] key to select the weighing unit (kg, g, lb, oz,)

The unit can be changed during the weighing. The value will be calculated according the selected unit.

3. **Weighing without container**

Verify that 0.000 is displayed. If not, push [ZERO] key.

Place the objects on the center of the platform.

The weight is displayed. **Important:** Note selected unit.

4. **Weighing with container (TARE)**

Place the empty container on the platform.

Push [ZERO] key. 0.000 must be displayed

Place the objects in the container.

Net weight is displayed.

Important: Note selected unit